



GSLC Gleanings March 9 - 15

No Moms Connect tonight and no Sunday School or Bible Studies on 3/12 due to Spring Break.



Pray Scripture

Pray for patience.

*But if we hope
for what we do not see,
we wait for it with patience.*

Romans 8:25 ESV

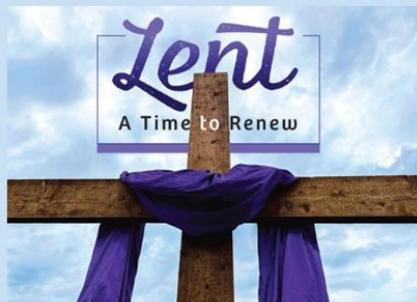
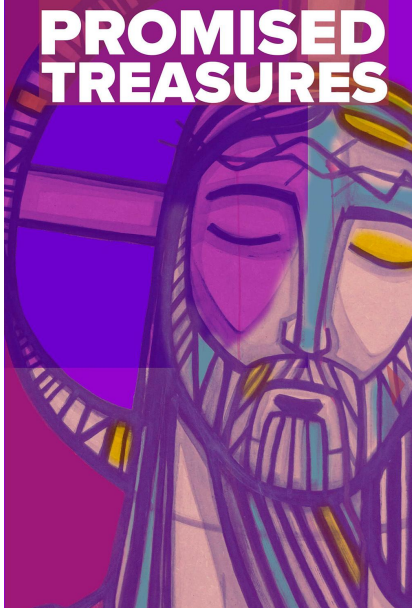
This edition:

- ~ Pastor Ted's [Post](#)
- ~ Lent Worship Schedule
- ~ Lenten Suppers - 5:30PM
- ~ Facebook Bible Study
- ~ Table Talk Bible Study
- ~ ***New*** Portals of Prayer available
- ~ ***New*** New Women's Bible Study
- ~ ***New*** Help Prepare for Easter Egg Walk
- ~ ***New*** Easter Resurrection Egg Walk
- ~ Easter Breakfast help needed
- ~ Choir Rehearsal
- ~ Food Shelf Need
- ~ Butter Braid Thanks
- ~ Security System Coming
- ~ **!! Email Scams !!**

*Looking for something else?
See "Did You Know?" below.*

Pastor's Post

[Click Here](#)



Ash Wednesday Worship: 2/22 at 7:00PM
Lenten Wednesday Worship: 3/1 through 3/29 at 7:00PM
Palm Sunday Worship: 4/2 at 8:30AM & 10:45PM
Maundy Thursday Worship: 4/6 at 7:00PM
Good Friday Worship: 4/7 at 7:00PM
Easter Sunday Worship: 4/9 at 8:00AM & 10:45AM
Easter Breakfast: 4/9 at 9:15 - 10:15AM



Join us for Lenten Supper each Wednesday, at 5:30PM before the Lenten Worship Service.

Meals will continue before Lenten Worship on Wednesdays through March 29th.

Friday's FB Bible Study Topic:

How do we evangelize. My good friend from seminary had his first call to the Florida panhandle. In Pensacola there was a Bible college that sent students into intersections harassing drivers with shouts of "Repent or burn in hell."

Would you call that effective evangelizing? Jesus evangelized the woman at the well by engaging her in conversation and helping her grow spiritually by offering her His water of life.

Join Pastor Byron on Facebook!



**Tuesday at 7:00PM
 OR
 Thursday at 10:30AM**
 (Same study offered at two separate times)

Next Week's Topic:

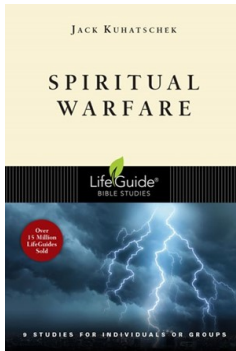
What is baptism? Why do we do it? Who can or should be baptized? Why do

we hold a different view of baptism than the Baptists? Join us at Table Talk as we discuss these and other questions on the nature and purpose of baptism. ~ *Pastor Byron*

New Portals of Prayer

Pick up the second quarter Portals of Prayer at the Connect Center today.

Spend some time with your Savior each day using this Concordia Publishing House devotional.



New Women's Study Coming

The Tuesday morning Bible Study will begin a new study in late March. It is entitled "Spiritual Warfare." We will find out just what it is; can I recognize it and in what ways does it affect me. The Bible has much to say about the temptations and struggles we face day by day. Through this study we will deepen our understanding of spiritual warfare and be directed to God-given sources of power, assurance, and hope. The cost of the book is \$8.00. If you are interested, contact Charlene Behne at 764-784-8320

by March 21st so we have adequate materials.

Help Prepare for the Resurrection Egg Walk!

Your help is needed on March 25th from 10:00 AM to 3:00 PM to prepare for the Easter Resurrection Egg Walk. Even if you have only an hour to spare, please join the fun. Lunch will be served.

Easter Resurrection Egg Walk

On April 1st from 10:00AM - Noon, Good Shepherd will be hosting an *Easter Resurrection Egg Walk*.

Families/Kids will go to individual stations to learn about the the Easter Story as told through the Resurrection Eggs.



How can you help?

1. Sign up in the lobby to lead a station, be a greeter, or help in the parking lot.
2. Donate plastic eggs, candy, or prefilled plastic eggs with candy in them.
3. Join us to fill eggs and assemble bags. (3/25 - see above.)

If you have any questions please reach out to Melanie Appelquist.

Easter Breakfast help needed.

Sign up in the Lobby for ways you can help with the Easter Breakfast. There is a prep day Saturday 4/8 as well as set-up, serve, and clean-up options on Easter Sunday. Please sign up today! Many hands make light work.



Choir Rehearsal Resumes

Come and join us for Choir! We'll rehearse right after the Lenten Services on Wednesday nights and prepare some great, fun music for Lent and Easter. All adults and youth are invited. Bring a friend! We need you!

The Food Shelf is in need of plastic grocery bags in good condition.

Feel free to drop them off at Good Shepherd in the food shelf bin near the coat racks.

Thank you !



Thank you!!

A big thank you everyone who purchased a Butter Braid. Your purchase will help the Good Shepherd Youth with their servant event this summer to Camp Omega! Butter Braids will be available to pick up March 26th.

Update on New Security System

This spring will bring the activation of the church's new security system. We thank you for your willingness to help us make our church as secure as possible.

If you currently do not have a key to access the building, this change will not affect you. If you need access during the hours the church is open, you will continue to use Door 4 and press the silver button on the device pictured here. We will be able to see you and communicate with you as well as to let you in.

Ministry leaders who have a key will exchange it for a key fob which will be the new way for you to unlock Door 4.

Important: Your key fob will open the door, HOWEVER, if you are entering outside of business hours, you will need to disarm the alarm using the distinct 4 digit code you will be assigned. You will be trained on how to use your fob and how to disarm the alarm BEFORE the system is implemented.



The goal is to implement this security system as soon as possible with documentation and training being made available before implementation.

Thanks again for your willingness to adapt to this change.



Email Scam Alert

Please be aware of email scams that come to your email in box and **look like** they are from Pastor Ted.

If you receive a suspicious email, take a look at the line at the top of the email that shows the email address it is coming from. (See example below*.)

It should be coming from **PTed @ goodshepherdlink.org**. If it is, then it's a good email. If not, block that sender from your email and delete it. If you have any concern, do not reply to the email in question, but start a new email and send directly to **PTed @ goodshepherdlink.org** to check with him on the email's validity.

Pastor Ted will NEVER ask for money or gift cards.

*Notice the email header below which states it is from a scammer: >, **not Pastor Ted's email. Please do not reply to emails like this for your own safety and security. Thank you.**

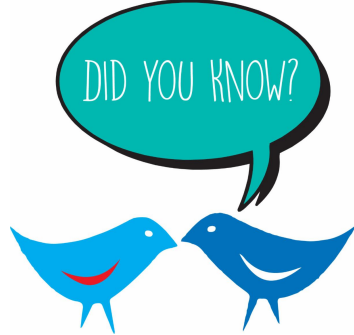


PASTOR TED DIEDRICK <officeonline7170@gmail.com>
To Office

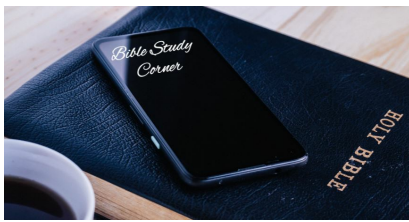
Are you looking for something in particular?

Check out the links below.

If you have other questions, please contact [Ann](#).



Join us for Traditional Worship with organ-led hymns at 8:30AM or Contemporary Worship with praise band led praise songs at 10:45AM. Communion is held on the 2nd and 4th Sundays at both services. Feel free to sign the register as it comes around during service. Thank you!



Bible Study Corner

At Good Shepherd, we each seek to Grow in our relationship with Jesus through God's Word. Check out the following opportunities!

- Sunday morning children and youth studies (Sept - May) plus Pastor-led study (year round).
- Are you a Facebook user? Did you know there is a [Bible Study on Facebook](#)? Pastor Byron posts a new devotion each Friday. Feel free to read along with him and post your thoughts! (See weekly topic above.)
- You can also find a number of online studies on the *YouVersion Bible App* for your phone, it's free! Study on your own or with a friend.
- Men's, Women's and marriage study options - see the [website](#).

Free WI-FI

If you want to use WI-FI while in the building, open your WI-FI settings and select "Good Shepherd Guest" and enter the password "Shep55014!".



If you wish to include an announcement in the Sunday bulletin or the Thursday Gleanings, please submit your short article by Tuesday at noon.

You may email the office at office@goodshepherdlink.org or drop your article in Ann's mailbox in the workroom.

Altar Flowers

[Click here](#) to see how you can purchase altar flowers for any Sunday and also take them home with you after the 10:45AM service if you desire.



What is homeschooling? Is homeschooling right for my family?

If you've ever asked similar questions, click [HERE](#) to begin to find answers. Good Shepherd is here to support you in whatever school choice you make. Please [contact us](#) with your questions, concerns, or needs.

Click to set up and access Good Shepherd's directory online or from your phone.

Instant
Church Directory™
Online



How to Worship and Serve the Lord through the Generosity of Giving

There are three ways to financially support the mission of Jesus Christ at Good Shepherd. Click [HERE](#) to discover how.

How can you support the Youth Group at Good Shepherd?

Click [HERE](#) to find out!



Good Shepherd Lutheran Church | [\[E-mail\]](#) | [\[Website\]](#)
1 Shepherd Court
Circle Pines, MN 55014
763-784-8417

Connect with us



Good Shepherd Lutheran Church | One Shepherd Ct, Circle Pines, MN 55014

[Unsubscribe office@goodshepherdlink.org](mailto:office@goodshepherdlink.org)

[Update Profile](#) | [Constant Contact Data Notice](#)

Sent by office@goodshepherdlink.org powered by



Try email marketing for free today!