



GSLC Gleanings March 2 - 8



Pray Scripture

Pray for God's guidance.

*And the Lord will guide you
continually and satisfy your desire
in scorched places
and make your bones strong;
and you shall be like a watered
garden, like a spring of water,
whose waters do not fail.*

Isaiah 58:11 ESV

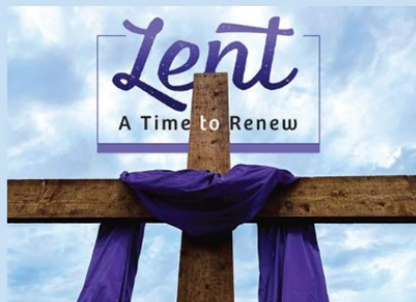
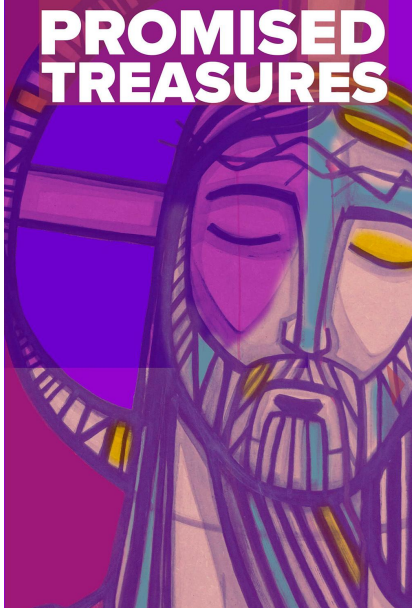
This edition:

- ~ Pastor Ted's Post is on break
- ~ Lent Worship Schedule
- ~ Lenten Suppers - 5:30PM
- ~ Easter Flowers
- ~ Facebook Bible Study
- ~ Table Talk Bible Study
- ~ ***New*** New Women's Bible Study
- ~ Easter Resurrection Event
- ~ Creation Museum Trip
- ~ Choir Rehearsal
- ~ St. Andrews Service Week 3/5-11
- ~ Food Shelf Need
- ~ Butter Braid Sale
- ~ Security System Coming
- ~ **!! Email Scams !!**

***Looking for something else?
See "Did You Know?" below.***

Pastor's Post

...is taking a break



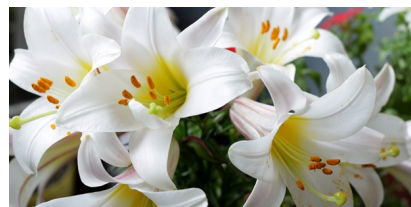
Ash Wednesday Worship: 2/22 at 7:00PM
Lenten Wednesday Worship: 3/1 through 3/29 at 7:00PM
Palm Sunday Worship: 4/2 at 8:30AM & 10:45PM
Maundy Thursday Worship: 4/6 at 7:00PM
Good Friday Worship: 4/7 at 7:00PM
Easter Sunday Worship: 4/9 at 8:00AM & 10:45AM
Easter Breakfast: 4/9 at 9:15 - 10:15AM



Join us for Lenten Supper each Wednesday, at 5:30PM before the Lenten Worship Service.

Meals will continue before Lenten Worship on Wednesdays through March 29th.

Easter Flowers



We have switched the greenhouse we are using for Easter Flowers this year to Gertens. (Gertens has provided our Poinsettias for the past few years.)

The switch from Lyndes Greenhouse occurred because Lyndes experienced an arson fire late last year. At that time they were able to save their poinsettias that were growing and we enjoyed them again this past Christmas. However, because of their loss, they were unable to grow Easter flowers for this Easter.

We have learned that many churches will be looking to Gertens for Easter flowers this year so we are asking you to **place your order by Sunday, March 5th.**

Click [HERE](#) to download an order form or [HERE](#) to view flower photos. Make your check payable to Good Shepherd and place check and order form in the drop box at the Connect Center. Thank you!



Friday's [FB Bible Study](#) Topic:

Christians are familiar with John 3:16. What prompted Jesus to speak these words? It began with His conversation with a man named Nicodemus. He came to Jesus with an honest question: "who are you?" He had heard Him teach and had heard about or seen the miracles. Who are you? Nicodemus was

probably confused because Jesus did not fit the role expected of the Messiah. What about you? Do you know who Jesus is?

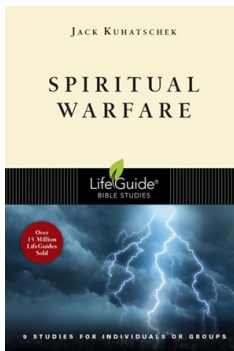
Join Pastor Byron on Facebook!

Tuesday at 7:00PM
OR
Thursday at 10:30AM
(Same study offered at two separate times)



Next Week's Topic:

The review of the Small Catechism will resume this week as we study the Lord's Prayer. Luther: All forgiveness, all blessings, all that is useful, and everything else a person needs for his body and soul on earth and in heaven overflow from this prayer. *(Pastor Byron returns to lead.)*



New Women's Study Coming

The Tuesday morning Bible Study will begin a new study in late March. It is entitled "Spiritual Warfare." We will find out just what it is; can I recognize it and in what ways does it affect me. The Bible has much to say about the temptations and struggles we face day by day. Through this study we will deepen our understanding of spiritual warfare and be directed to God-given sources of power, assurance, and hope. The cost of the book is \$8.00. If you are interested, contact Charlene Behne at 764-784-8320

by March 21st so we have adequate materials.

Easter Resurrection Egg Walk

On April 1st from 10:00AM - Noon, Good Shepherd will be hosting an *Easter Resurrection Egg Walk*.

Families/Kids will go to individual stations to learn about the the Easter Story as told through the Resurrection Eggs.



How can you help?

1. Sign up in the lobby to lead a station, be a greeter, or help in the parking lot.
2. Donate plastic eggs, candy, or prefilled plastic eggs with candy in them.
3. Join us to fill eggs and assemble bags. (Dates TBD.)

If you have any questions please reach out to Melanie Appelquist.

****Deadline Extended One Week***
**Make Plans to Travel to the Ark
Encounter & Creation Museum**

Steve and Chery Baker have signed up for this trip and they are encouraging others from Good Shepherd to join them.

Please click on the link below to download the trip information and then contact Dennis Bohren at 503-460-7733 or dennis/bohren@comcast.net. The deadline to sign up for this trip is TOMORROW, Wednesday, February 22nd.



[Download information](#)



Choir Rehearsal Resumes

Come and join us for Choir! We'll rehearse right after the Lenten Services on Wednesday nights and prepare some great, fun music for Lent and Easter. All adults and youth are invited. Bring a friend! We need you!

March 5th - 11th will be Good Shepherd's next opportunity to serve at the St. Andrew's Family Shelter.

If you are already a volunteer, click [HERE](#) to sign up to donate food, work the dinner shift or work the overnight shift.

If you are not currently a volunteer but you are interested, please contact [Judi Krueger](#) to get signed up.



The Food Shelf is in need of plastic grocery bags in good condition.

Feel free to drop them off at Good Shepherd in the food shelf bin near the coat racks.

Thank you !



Looking for a yummy treat?

Good Shepherd Youth will be selling Butter Braids for \$15 each through March 5th. To make a purchase, see the display at the Connect Center, talk to a youth or [click here](#) to order online. Money raised will support their servant event trip this summer.



Fundraiser update:

Thank you to those who supported Good Shepherd Youth through Amazon Smile. That program is ending on February 20th. Another easy way to support Good Shepherd Youth is by using www.goodsearch.com and www.goodshop.com. Make sure you select Good Shepherd Youth when you sign up. Also see a complete list of ways to offer your support below.

Update on New Security System



The new year will bring the activation of the church's new security system. We thank you for your willingness to help us make our church as secure as possible.

If you currently do not have a key to access the building, this change will not affect you. If you need access during the hours the church is open, you will continue to use Door 4 and press the silver button on the device pictured here. We will be able to see you and communicate with you as well as to let you in.

Ministry leaders who have a key will exchange it for a key fob which will be the new way for you to unlock Door 4.

Important: Your key fob will open the door, HOWEVER, if you are entering outside of business hours, you will need to disarm the alarm using the distinct 4 digit code you will be assigned. You will be trained on how to use your fob and how to disarm the alarm BEFORE the system is implemented.

The goal is to implement this security system as soon as possible with documentation and training being made available before implementation.

Thanks again for your willingness to adapt to this change.

Email Scam Alert

Please be aware of email scams that come to your email in box and **look like** they are from Pastor Ted.



If you receive a suspicious email, take a look at the line at the top of the email that shows the email address it is coming from. (See example below*.)

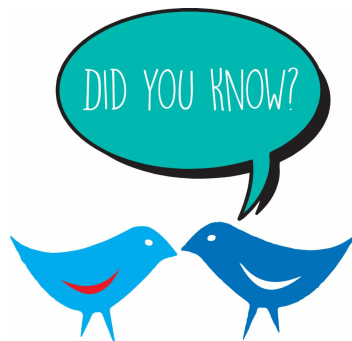
It should be coming from **PTed @ goodshepherdlink.org**. If it is, then it's a good email. If not, block that sender from your email and delete it. If you have any concern, do not reply to the email in question, but start a new email and send directly to **PTed @ goodshepherdlink.org** to check with him on the email's validity.

Pastor Ted will NEVER ask for money or gift cards.

*Notice the email header below which states it is from a scammer: >, **not Pastor Ted's email. Please do not reply to emails like this for your own safety and security. Thank you.**



PASTOR TED DIEDRICK <officeonline7170@gmail.com>
To Office



Are you looking for something in particular?

Check out the links below.

If you have other questions, please contact [Ann](#).

Join us for Traditional Worship with organ-led hymns at 8:30AM or Contemporary Worship with praise band led praise songs at 10:45AM. Communion is held on the 2nd and 4th Sundays at both services. Feel free to sign the register as it comes around during service. Thank you!





At Good Shepherd, we each seek to Grow in our relationship with Jesus through God's Word. Check out the following opportunities!

• Sunday morning children and youth studies (Sept - May) plus Pastor-led study (year round).

• Are you a Facebook user? Did you know there is a

[Bible Study on Facebook](#)? Pastor Byron posts a new devotion each Friday. Feel free to read along with him and post your thoughts! (See weekly topic above.)

- You can also find a number of online studies on the *YouVersion Bible App* for your phone, it's free! Study on your own or with a friend.
- Men's, Women's and marriage study options - see the [website](#).

Free WI-FI

If you want to use WI-FI while in the building, open your WI-FI settings and select "Good Shepherd Guest" and enter the password "Shep55014!".



If you wish to include an announcement in the Sunday bulletin or the Thursday Gleanings, please submit your short article by Tuesday at noon.

You may email the office at office@goodshepherdlink.org or drop your article in Ann's mailbox in the workroom.

Altar Flowers

[Click here](#) to see how you can purchase altar flowers for any Sunday and also take them home with you after the 10:45AM service if you desire.



What is homeschooling? Is homeschooling right for my family?

If you've ever asked similar questions, click [HERE](#) to begin to find answers. Good Shepherd is here to support you in whatever school choice you make. Please [contact us](#) with your questions, concerns, or needs.

Click to set up and access Good Shepherd's directory online or from your phone.

Instant
Church Directory™
Online

How to Worship and Serve the Lord through the Generosity of Giving

There are three ways to financially support the mission of Jesus

Christ at Good Shepherd. Click [HERE](#) to discover how.



How can you support the Youth Group at Good Shepherd?

Click [HERE](#) to find out!



Good Shepherd Lutheran Church | [\[E-mail\]](#) | [\[Website\]](#)
1 Shepherd Court
Circle Pines, MN 55014
763-784-8417

Connect with us



Good Shepherd Lutheran Church | One Shepherd Ct, Circle Pines, MN 55014

[Unsubscribe office@goodshepherdlink.org](mailto:office@goodshepherdlink.org)

[Update Profile](#) | [Constant Contact Data Notice](#)

Sent by office@goodshepherdlink.org powered by



Try email marketing for free today!