



## **GSLC Gleanings**

Feb. 23rd - Mar. 1st

---

### **Pray Scripture**

**Pray for God's provision.**

*And God is able  
to bless you abundantly,  
so that in all things at all times,  
having all that you need,  
you will abound in every good work.*

2 Corinthians 9:8 ESV

### ***This edition:***

- ~ [Pastor Ted's Post](#)
- ~ Lent Worship Schedule
- ~ Facebook Bible Study
- ~ Table Talk Bible Study
- ~ **\*New\*** Choir Rehearsal Resumes
- ~ **\*New\*** Order Easter flowers TODAY.
- ~ **\*New\*** Thanks from WINGS Quilters
- ~ **\*New\*** Easter Resurrection Egg Walk
- ~ St. Andrews Service Week 3/5-11
- ~ Food Shelf Need
- ~ WINGS / Moms Connect
- ~ Butter Braid Sale
- ~ Security System Coming
- ~ **!! Email Scams !!**

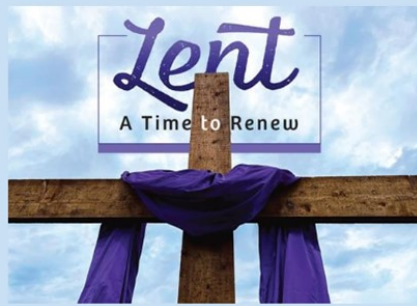
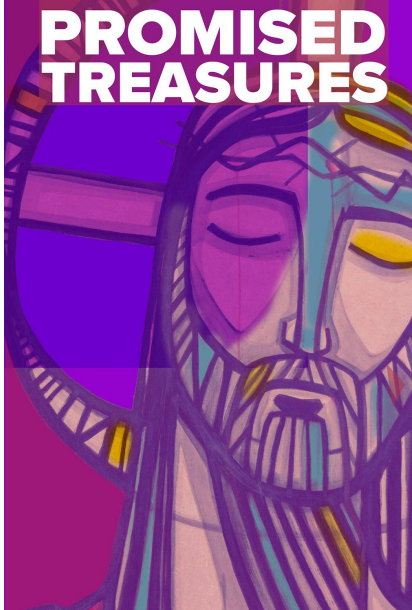
*Looking for something else?  
See "Did You Know?" below.*

---

# Pastor's Post

[Click Here](#)

---



**Ash Wednesday Worship:** 2/22 at 7:00PM  
**Lenten Wednesday Worship:** 3/1 through 3/29 at 7:00PM  
**Palm Sunday Worship:** 4/2 at 8:30AM & 10:45PM  
**Maundy Thursday Worship:** 4/6 at 7:00PM  
**Good Friday Worship:** 4/7 at 7:00PM  
**Easter Sunday Worship:** 4/9 at 8:00AM & 10:45AM  
**Easter Breakfast:** 4/9 at 9:15 - 10:15AM



### Friday's FB Bible Study Topic:

We live in a visual world. People are glued to their computer screens, TV's, phones, Kindles, and video games. Life's experiences, whether good or bad, are now paraded before the world on twitter, face book and YouTube. We express this visual attachment to the world in our speech. "Did you see?" "I couldn't believe my eyes!" "Seeing is believing." On the mountain, for a brief moment, our Lord's divine nature was revealed to the disciples in all of its glory. Peter, James, and John would have loved to capture the event for posterity. But, of course, they since they had no phones or cameras, all they could do was tell the others what they saw on the Mount of Transfiguration. What does all this mean for us?

*Join Pastor Byron on Facebook!*

**Tuesday at 7:00PM**  
**OR**  
**Thursday at 10:30AM**  
(Same study offered at two separate times)



Pastor Ted will be leading a discussion on the one world government concept as depicted in Revelation 13.

### Choir Rehearsal Resumes

Come and join us for Choir! We'll rehearse right after the Lenten Services on Wednesday nights and prepare some great, fun music for Lent and Easter. All adults and youth are invited. Bring a friend! We

need you!



---

## ***Easter Flowers***

We have switched the greenhouse we are using for Easter Flowers this year to Gertens. (Gertens has provided our Poinsettias for the past few years.)



The switch from Lyndes Greenhouse occurred because Lyndes experienced an arson fire late last year. At that time they were able to save their poinsettias that were growing and we enjoyed them again this past Christmas. However, because of their loss, they were unable to grow Easter flowers for this Easter.

We have learned that many churches will be looking to Gertens for Easter flowers this year so we are asking you to **place your order ASAP**. We would like to submit our order **NO LATER THAN March 6th**, but would like to call in our orders as we go in order to get them reserved.

Click [HERE](#) to download an order form or [HERE](#) to view flower photos. Make your check payable to Good Shepherd and place check and order form in the drop box at the Connect Center. Thank you!



---

Thank you Good Shepherd!

Through your generous support the quilting team can provide pillows and quilts to those in need. Recently sixty-five flag pillows were delivered to the Veteran's Home in LuVerne, Minnesota.

The pillows were distributed to the Vets on Valentine's Day with the following message: "With our love and gratitude for your service to our nation."

Come and join us on Thursday afternoons at 1:00PM as we stuff more pillows and tie more quilts.

---

### Easter Resurrection Egg Walk

On April 1st from 10:00AM -

Noon, Good Shepherd will be hosting an *Easter Resurrection Egg Walk*.

Families/Kids will go to individual stations to learn about the the Easter Story as told through the Resurrection Eggs.



***How can you help?***

1. Sign up in the lobby to lead a station, be a greeter, or help in the parking lot.
2. Donate plastic eggs, candy, or prefilled plastic eggs with candy in them.
3. Join us to fill eggs and assemble bags. (Dates TBD.)

If you have any questions please reach out to Melanie Appelquist.

---



March 5th - 11th will be Good Shepherd's next opportunity to serve at the St. Andrew's Family Shelter.

If you are already a volunteer, click [HERE](#) to sign up to donate food, work the dinner shift or work the overnight shift.

If you are not currently a volunteer but you are interested, please contact [Judi Krueger](#) to get signed up.

---

The Food Shelf is in need of plastic grocery bags in good condition.

Feel free to drop them off at Good Shepherd in the food shelf bin near the coat racks.

Thank you !

---



WINGS and Moms Connect will meet together this Saturday, February 25th at 9:30AM in the Fellowship Room. All women are welcome to attend!

---



### **Looking for a yummy treat?**

Good Shepherd Youth will be selling Butter Braids for \$15 each through March 5th. To make a purchase, see the display at the Connect Center, talk to a youth or [click here](#) to order online. Money raised will support their servant

event trip this summer.

### **Fundraiser update:**

Thank you to those who supported Good Shepherd Youth through Amazon Smile. That program is ending on February 20th.

Another easy way to support Good Shepherd Youth is by using [www.goodsearch.com](http://www.goodsearch.com) and [www.goodshop.com](http://www.goodshop.com). Make sure you select Good Shepherd Youth when you sign up. Also see a complete list of ways to offer your support below.

---

## **Update on New Security System**

The new year will bring the activation of the church's new security system. We thank you for your willingness to help us make our church as secure as possible.

**If you currently do not have a key to access the building, this change will not affect you.** If you need access during the hours the church is open, you will continue to use Door 4 and press the silver button on the device pictured here. We will be able to see you and communicate with you as well as to let you in.

**Ministry leaders who have a key** will exchange it for a key fob which will be the new way for you to unlock Door 4.

***Important:*** Your key fob will open the door, HOWEVER, if you are entering outside of business hours, you will need to disarm the alarm using the distinct 4 digit code you will be assigned. You will be trained on how to use your fob and how to disarm the alarm BEFORE the system is implemented.

The goal is to implement this security system as soon as possible with documentation and training being made available before implementation.

Thanks again for your willingness to adapt to this change.

---



## **Email Scam Alert**

Please be aware of email scams that come to your email in box and **look like** they are from Pastor Ted.



If you receive a suspicious email, take a look at the line at the top of the email that shows the email address it is coming from. (See example below\*.)

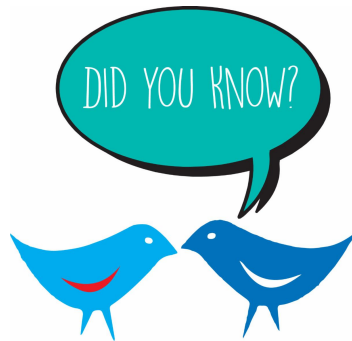
It should be coming from **PTed @ goodshepherdlink.org**. If it is, then it's a good email. If not, block that sender from your email and delete it. If you have any concern, do not reply to the email in question, but start a new email and send directly to **PTed @ goodshepherdlink.org** to check with him on the email's validity.

Pastor Ted will NEVER ask for money or gift cards.

\*Notice the email header below which states it is from a scammer: >, *not Pastor Ted's email. Please do not reply to emails like this for your own safety and security. Thank you.*



PASTOR TED DIEDRICK <officeonline7170@gmail.com>  
To Office



*Are you looking for something in particular?*

Check out the links below.

If you have other questions, please contact [Ann](#).

Join us for Traditional Worship with organ-led hymns at 8:30AM or Contemporary Worship with praise band led praise songs at 10:45AM. Communion is held on the 2nd and 4th Sundays at both services. Feel free to sign the register as it comes around during service. Thank you!



### Bible Study Corner

At Good Shepherd, we each seek to Grow in our relationship with Jesus through God's Word. Check out the following opportunities!

- Sunday morning children and youth studies (Sept - May) plus Pastor-led study (year round).
- Are you a Facebook user? Did you know there is a [Bible Study on Facebook](#)? Pastor Byron posts a new devotion each Friday. Feel free to read along with him

- and post your thoughts! (See weekly topic above.)
- You can also find a number of online studies on the *YouVersion Bible App* for your phone, it's free! Study on your own or with a friend.
  - Men's, Women's and marriage study options - see the [website](#).

---

### Free WI-FI

If you want to use WI-FI while in the building, open your WI-FI settings and select “**Good Shepherd Guest**” and enter the password “**Shep55014!**”.



If you wish to include an announcement in the Sunday bulletin or the Thursday Gleanings, please submit your short article by Tuesday at noon.

You may email the office at [office@goodshepherdlink.org](mailto:office@goodshepherdlink.org) or drop your article in Ann's mailbox in the workroom.

---

### Altar Flowers

[Click here](#) to see how you can purchase altar flowers for any Sunday and also take them home with you after the 10:45AM service if you desire.



### What is homeschooling? Is homeschooling right for my family?

If you've ever asked similar questions, click [HERE](#) to begin to find answers. Good Shepherd is here to support you in whatever school choice you make. Please [contact us](#) with your questions, concerns, or needs.

Click to set up and access Good Shepherd's directory online or from your phone.

Instant  
**Church Directory™**  
Online



### How to Worship and Serve the Lord through the Generosity of Giving

There are three ways to financially support the mission of Jesus Christ at Good Shepherd. Click [HERE](#) to discover how.

---

How can you support the Youth  
Group at Good Shepherd?

Click [HERE](#) to find out!



Good Shepherd Lutheran Church | [\[E-mail\]](#) | [\[Website\]](#)  
1 Shepherd Court  
Circle Pines, MN 55014  
763-784-8417

Connect with us



Good Shepherd Lutheran Church | One Shepherd Ct, Circle Pines, MN 55014

[Unsubscribe office@goodshepherdlink.org](mailto:office@goodshepherdlink.org)

[Update Profile](#) | [Constant Contact Data Notice](#)

Sent by office@goodshepherdlink.org powered by



Try email marketing for free today!